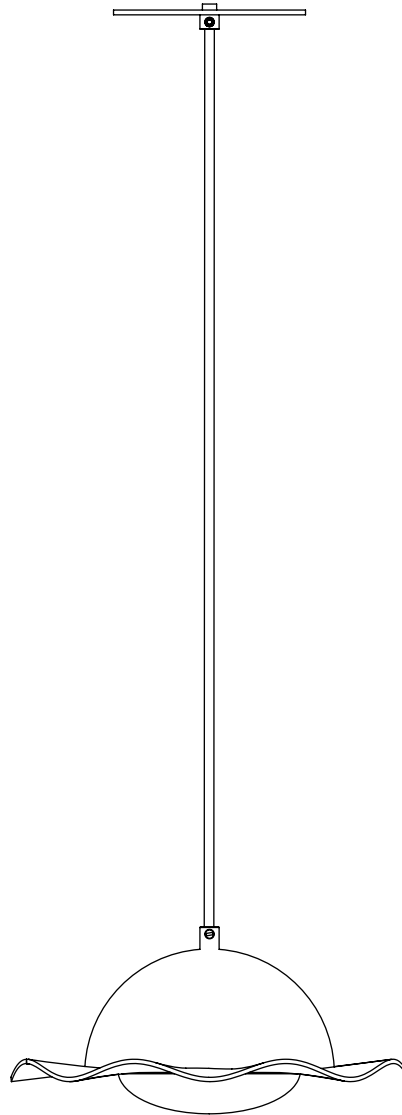


LA00 Light Fixture Installation Guide



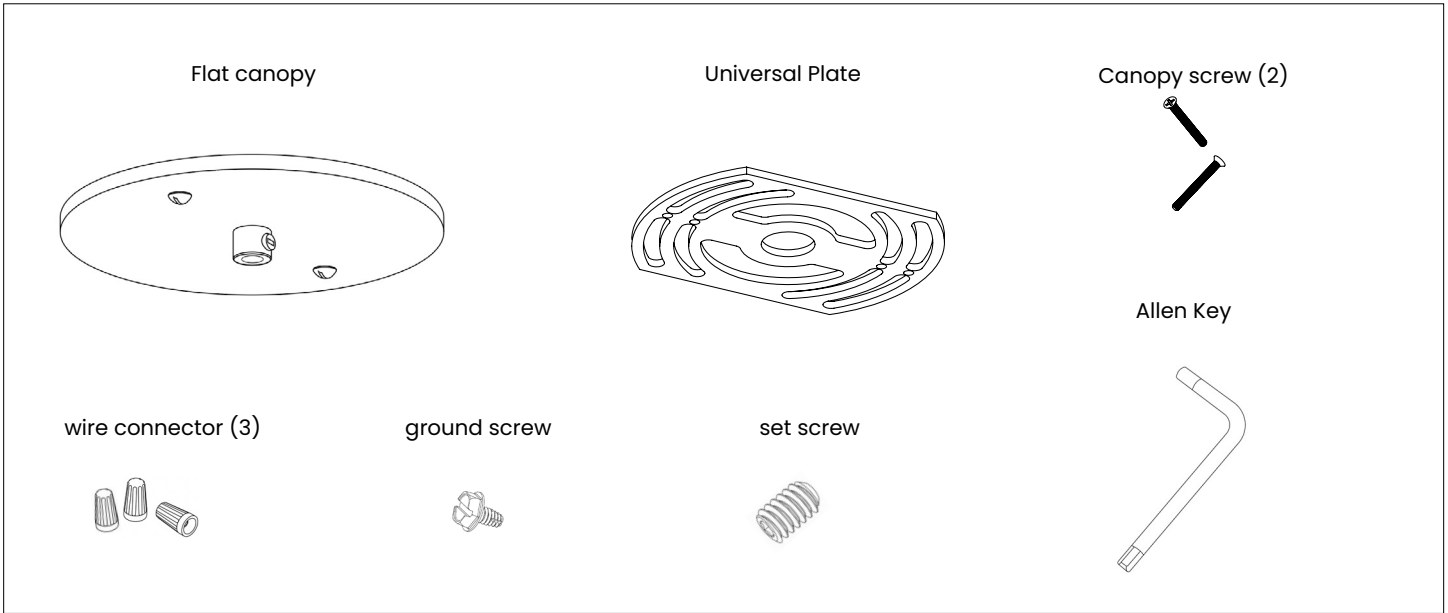
The electrical connection of the canopy must be carried out by a **certified electrician**, in accordance with the Canadian Electrical Code. *

Luminaireauthentik.com • 1122 Rue du Sud, Cowansville, QC J2K 3Y5 • (514) 662-0352

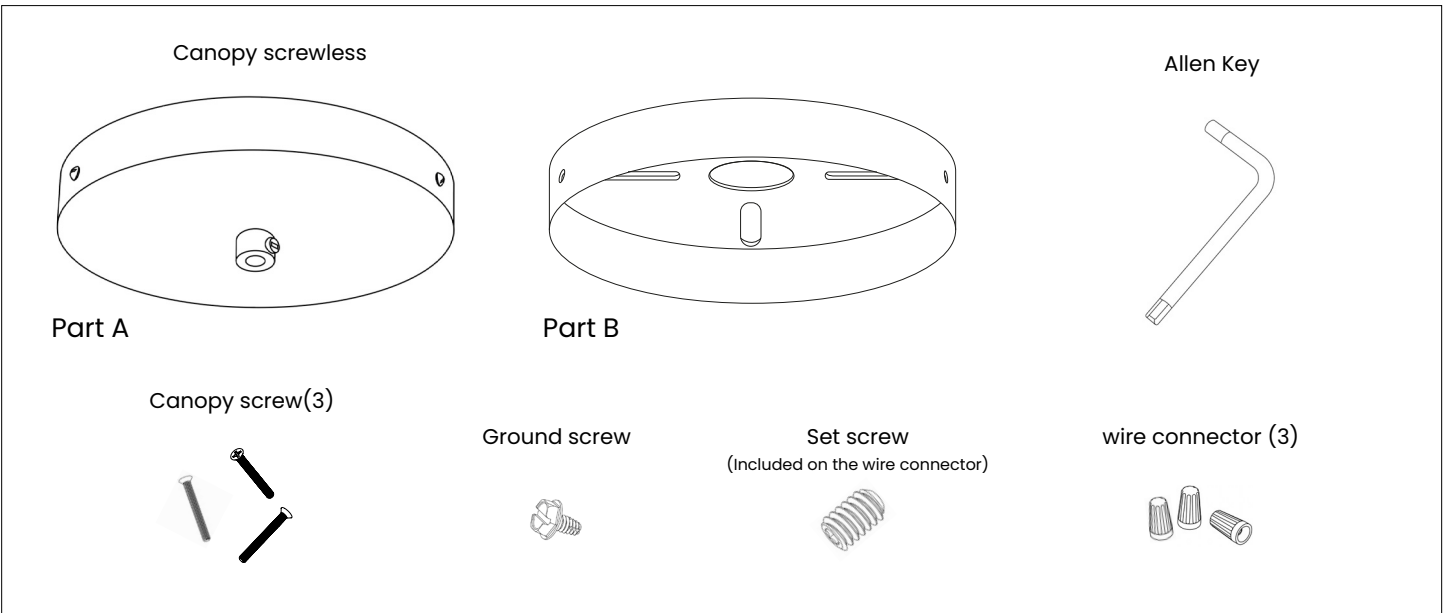


List of components

Flat canopy LA00



Screwless Canopy LA00

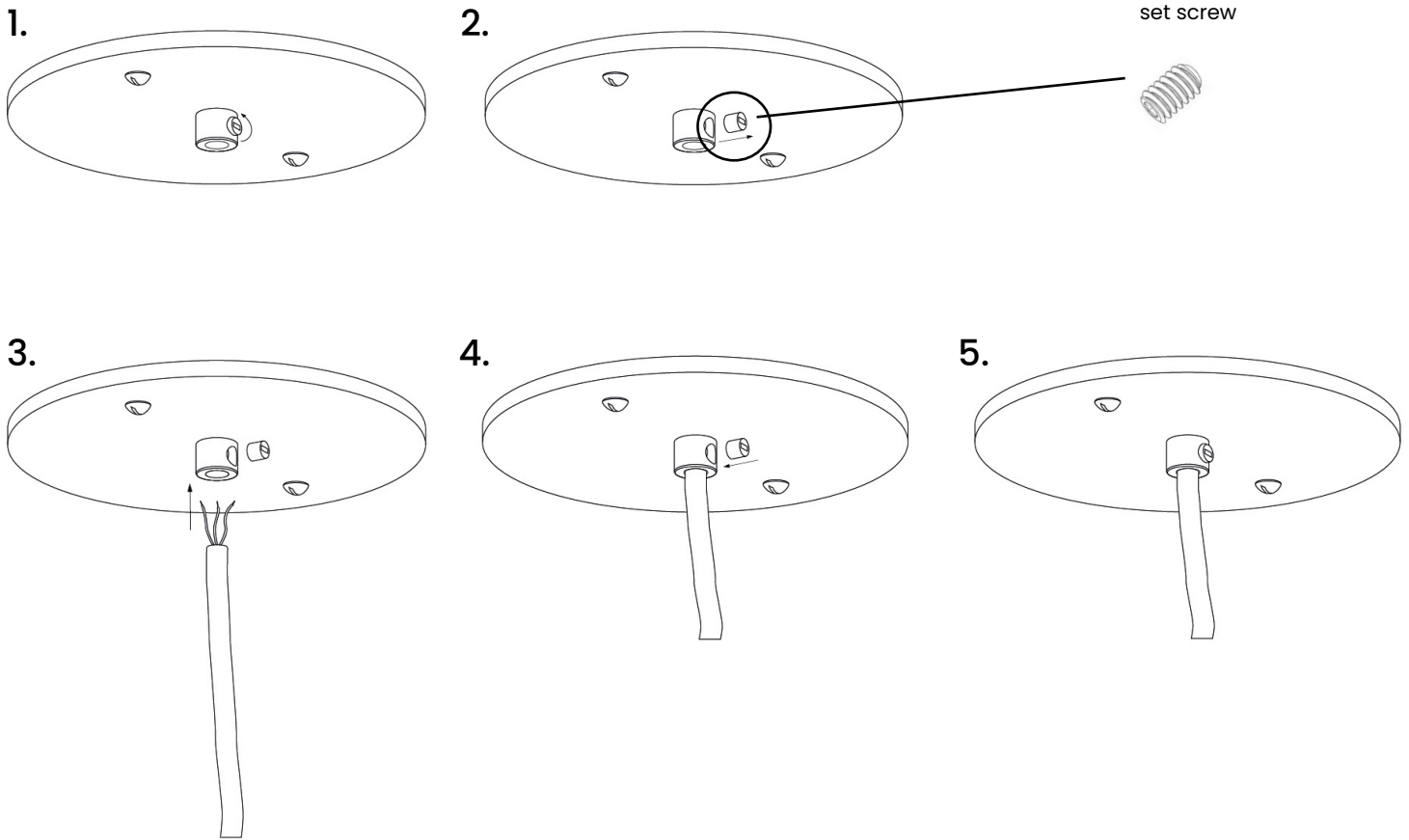


+ What you need from your toolbox



Step 1

Installation for wire pendant LA00

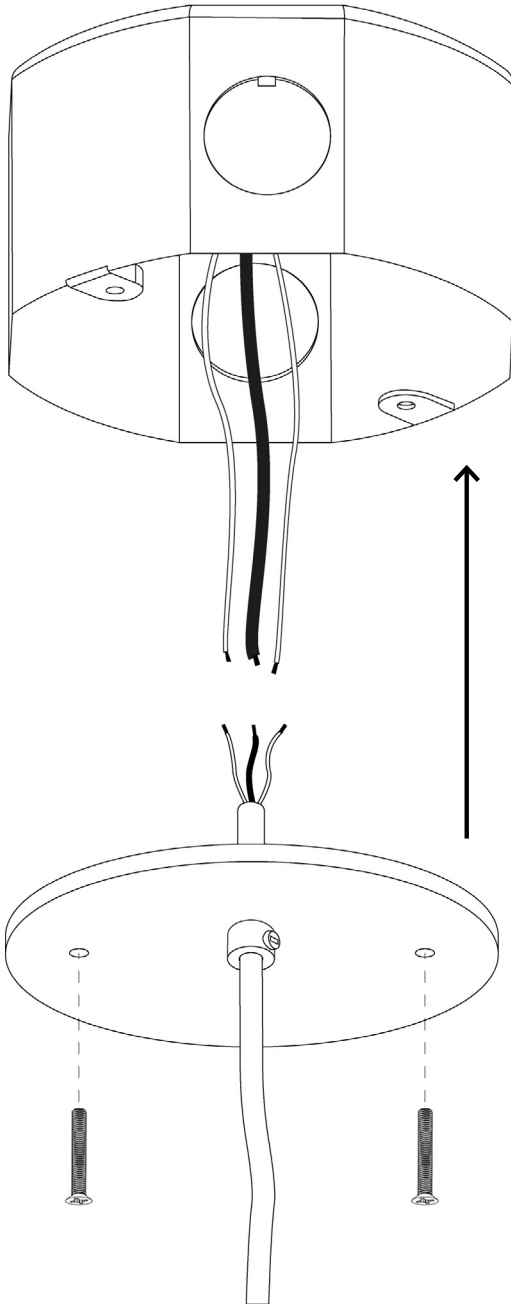


1. Unscrew the set screw with the allen key and remove it.
2. Pass the wire through the canopy (leave enough wire protruding for connection).
3. Secure the set screw into place to stabilize the cable.

Step 2

Canopy installation for wire pendants LA00

Flat Canopy LA00

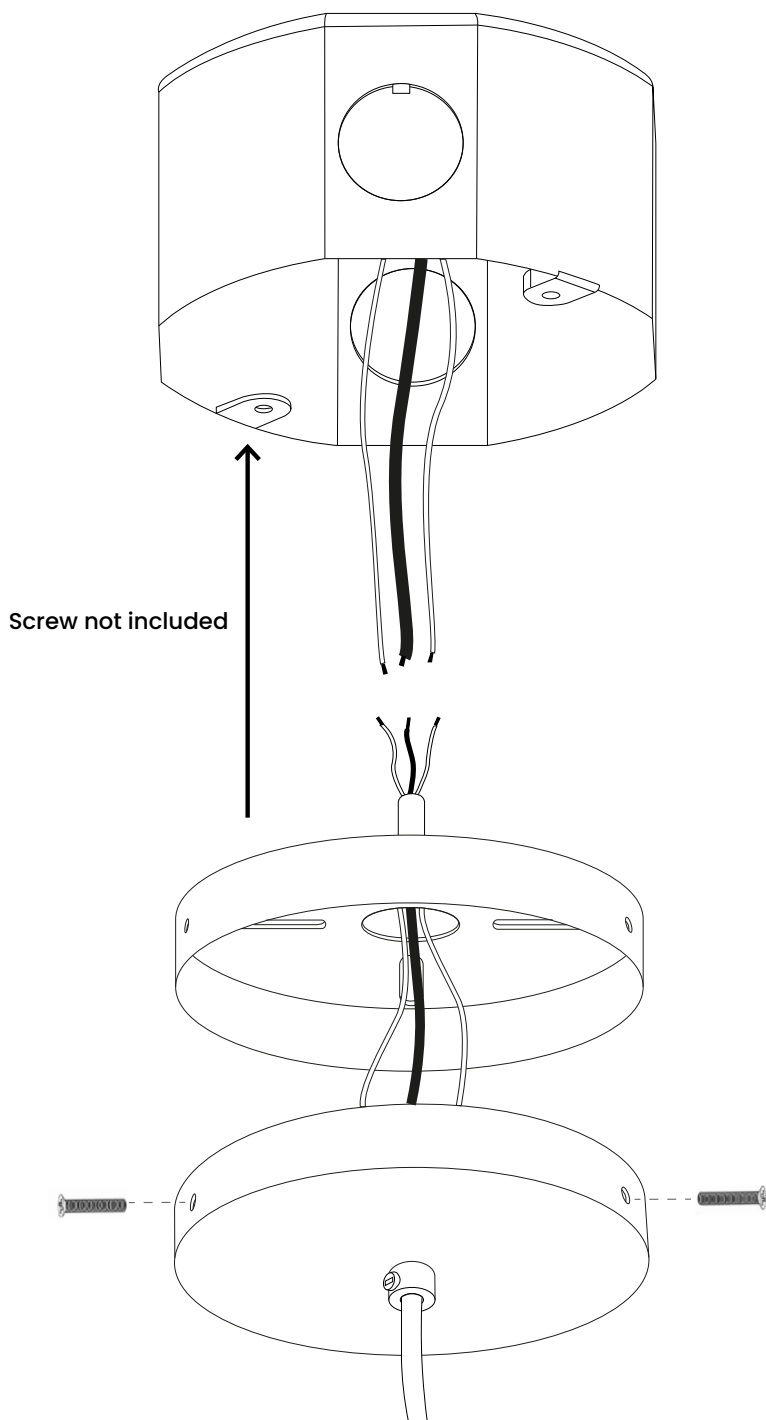


1. Connect the junction box wires to the light fixture wires.
2. Align the canopy holes with the junction box and secure it in place.
3. Ensure that the wire is properly attached and secure. The light fixture must be stable and well supported.

Step 2

Canopy installation for wire pendants LA00

Screwless Canopy LA00



1. Screw Part B of the canopy to the junction box.

2. Connect the junction box wires to the light fixture wires.

3. Align the holes of canopy Part A and Part B and screw into place.

4. Ensure that the wire is properly attached and secure.

The light fixture must be stable and well supported.

LA LUMINAIRE

